



*We learn. We show respect.  
We are safe.*

Thursday 20<sup>th</sup> February 2025 Week 4

*"Golden Past, Bright Futures"*

Canterbury Street, Vic. 3370

Telephone (03) 5345 3182

Email: [clunes.ps@education.vic.gov.au](mailto:clunes.ps@education.vic.gov.au)

# Clunes Primary School Newsletter

## UPCOMING EVENTS

Please see Term 1 Calendar draft #3- each fortnightly Newsletter will have new events added so please check regularly. Thank you! 😊

**Students with Asthma. Please bring your clearly labelled, up to date 2025 Asthma Management Plans to school asap.**

Our 2025 Prep/ Foundation P students have a Rest/ Assessment Day- each Wednesday for the first 6-7 Weeks (TBC) of Term 1, 2025. Year 1P students will learn with Mrs Purdie (formerly Miss Dargaville) until Recess and then 1P will be taught by Ms Jardine or Jane for the remainder of the day. Mrs Purdie will confirm the exact end date at the end of Feb. An Assessment schedule has already been forwarded to parents.

Dear Parents/Caregivers,

Please find information about our upcoming bulb drive in this newsletter as well as a copy of the CSEF application form on the back of this newsletter. CSEF is financial assistance for any families who currently have a Healthcare Card.

**Farewell Tim!**

We wish Tim every success at his new school, in Melton. Thank you Tim for supporting our school as an Aide, particularly the students in 1/ 2MJ in 2024 and the 5 /6B students at the beginning of this year.



School Captain Isla enjoying the 2025 Welcome BBQ Sausage Sizzle.

### WHAT HAS GONE HOME?

The following notes have gone home – 18/2- Updated Senior School Swimming Sports – to be held at the **Daylesford Pool!**

### Our 2025 Food Bank Fundraiser launch.



There is a Welcome BBQ feature page in the Newsletter & more photos at school.



**\*In 2025 we have a student who has a severe allergy to NUTS!**  
We will need to be a **NO NUTS school**, as our students mix with and play with each other across the school day. Our junior school Buddies will meet for learning activities with our senior school Buddies. Thank you sincerely for considering the safety of our students as you choose what food is placed in your child's daily snack and lunch box.

Best wishes to you all for a positive fortnight ahead!  
Kind regards, Sonia & the staff of CPS. 😊

## STUDENT OF THE WEEK AWARDS FOR TERM 1

Our School Values Awards focus on:

**We Learn**

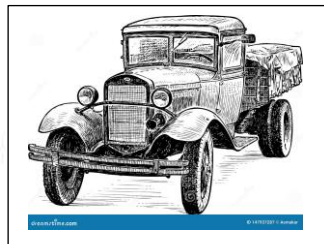
**We Show Respect**

**We are Safe**

Our Term 1 You Can Do It focus is:

**Getting Along**

|   |  |
|---|--|
| Prep /1P- Noa   | 2 /3AK – Jasper, Danielle  |
| 3 /4MJ – Spencer  | 5/6B – Larissa   |
|   | Principal's Award –  |
| Performing Arts Award- Duncan<br>Visual Arts Award – Zach F | Physical Education Award- Izaak, Max K<br>LOTE- Japanese Award- Ethan, Bella |



### Historic Vehicle Show- School Fundraiser Sunday 9<sup>th</sup> March 2025

Dear Parents/ Guardians,

Once again we are catering at this well-attended event at the Clunes Show Grounds. It will be held on Sunday 9<sup>th</sup> March, Labour Day Weekend.

We provide sandwiches and scones (Devonshire Teas).

It was a good fundraiser for us last year raising seven hundred and forty-three dollars that went into programs and equipment for our students. We will be looking for donations of some of your wonderful scones to help us make this a successful fundraiser for us again this year.

We would also appreciate any time you can spare on the day for an hour or so. Please let the Office know.

PLEASE drop the scones in to us at the Show Grounds on the Sunday morning.

We will begin to make the sandwiches at 9am.

Regards Sonia Jardine & our Fundraising Group team





# Welcome BBQ 2025



Almost all of our families were able to attend our 2025 Welcome BBQ and enjoy a chat with staff &



other families,



eat a sausage or two, have a Zooper Dooper and visit our Open Classrooms.



Thank you! ☺





Active use before, during and after school



Check out our new four square court!



Sincere thanks is given to:  
Deb and the Bright family  
Parents / Fundraising Group members &  
Rob Anderson, Jesse Clowes & helpers  
For applying for the competition to win the court, preparing the surface before concreting, and laying the concrete ready for Kobi from Sports Courts Victoria to piece together the court! We love it!



# 5 /6B Japanese learning



This year in Year 5/6B we have established an online exchange with a Grade 5 and 6 class at Showa Primary School in the Okayama Prefecture, Japan. All Grade 5 and 6 students have been paired up with a Japanese buddy and they were excited to receive their Christmas card written in English during the first lesson. Each student carefully read their Christmas card and were excited to know already what their buddy likes. The class found out about each Japanese student's favourite singer. Kaze Fujii is a very popular musician in Japan and the class then enjoyed watching his music video to get to know the singer. The first project for the 5 /6B class is to communicate with their Japanese buddy by writing a reply, in Japanese language. Students will use their full Japanese skills and use some ICT technology to complete the learning task. In March, we are planning to meet each buddy via a Zoom meeting and both classes will continue to communicate with each other, in their learning language, throughout the year.







# Senior Swimming Sports at the Daylesford Pool Monday 24th Feb.



The Clunes Pool is out of action and will not have been repaired by next Monday, our scheduled Clunes PS Senior School Swimming Sports Day. However, we have arranged an alternative venue at the Daylesford Pool so that we do not miss out on a school swimming sports for two years in a row. Our school council will cover the \$5 per child cost to attend the sports. Wesley @ Clunes will incredibly generously provide our school with three free buses and drivers to transport all senior students to and from the Daylesford Pool. Years 3-6 students will have already received a hard copy note and parents, an electronic note, about attending the Daylesford Pool instead of the Clunes Pool. Mr James & I met with Hepburn Shire & Pool representatives on Wednesday after school at the Daylesford Pool. It is a 50m pool and has a very long 'shallow end' which will support our swimmers of all abilities. It has lots of shade sail cover. Please see photos of the pool to help prepare us all for this new Sports experience.

The schedule will be as follows:

|               |                                      |
|---------------|--------------------------------------|
| 10am          | Leave school                         |
| 10:45am       | Arrive at Daylesford Pool/ Eat Snack |
| 11:15am       | Begin the Swimming Event             |
| 12:45pm       | Finish the Swimming Event            |
| 12:45– 1:00pm | Free Swim                            |
| 1:00– 1:30pm  | Eat/ Change                          |
| 1:30pm        | Leave for school                     |
| 2:15pm        | Back at Clunes PS                    |



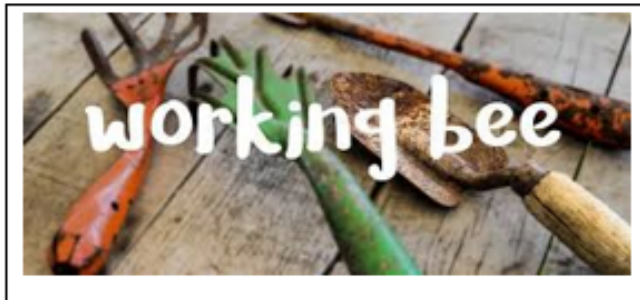
Our Swimming Sports Program will be forwarded home today.

Please speak to Mr James if you have any further questions.

There will not be a Canteen operating at the Daylesford Pool on the day of the Sports.

## **Working Bee -this Sunday 23<sup>rd</sup> February 8.30-11am**

Priority Yellow highlights below = not yet started/ not yet complete but started at the last Working Bee or during the term.



### **Please bring:**

Your Garden Gloves

Wheelbarrows

Pruning gear

Shovels and rakes

Whipper snippers

Ladder for gutter clearing (walkway height only)

Chain Saw

Doors- repair the external 5 /6B door

Re-glue floor tiles in 3/ 4 MJ classroom

Prune / dead head the Protea tree & roses

Prune the Plane Trees to 'safe' head-height

Saw the two broken fruit tree limbs in the Kitchen Garden area near the Chook House

Rake the soft fall in the Junior & Senior Playgrounds to reposition to priority areas

**Scrub out drinking troughs**

**Clear the P/1 Drinking Trough of small amount of sand**

**Clear the courtyard facing gutters and storm water drains in the courtyard**

Prune the flax at the front of school- front garden bed/s in order to reveal where the Time Capsule was placed (ready for the 150<sup>th</sup> celebration)

Weed within the raised mulched garden beds in front of the Staff room Bay window and the perimeter of the courtyard. Cut away the creeping rose vine.

**Remove the branches overhanging into the BER Building, prune back the potato plant along the Outdoor Learning Area walkway**

Remove some of the passionfruit vine from the Chook House shade cloth. (too heavy & very fast growing)

Remove the excess branch and leaf litter on all boundary fences.

Repair the railing on the BER decking and resecure the floorboards on the decking of the BER

# Your privacy

Our school collects, uses, discloses and stores student and parent personal information for standard school functions or where permitted by law, as stated in the Schools' Privacy Policy.

Please take time to remind yourself of our school's collection notice, found on our website

<https://www.clunesps.vic.edu.au/school-profile/privacy-policy/>. For more information about privacy, refer to: [Schools' Privacy Policy — information for parents](#).



**A mobile phone** is a telephone with access to a cellular (telecommunication) system, with or without a physical connection to a network. For the purpose of the Clunes Primary School policy, “mobile phone” refers to mobile phones and any device that may connect to or have similar functionality to a mobile phone such as smart watches.

### **Personal student mobile phone use**

In accordance with the Department's [Mobile Phones Policy](#) issued by the Minister for Education, personal student mobile phones, including Smart Watches must not be used at Clunes Primary School during school hours, including school bus travel, lunchtime and recess, unless an exception has been granted.

**POLICY** Clunes Primary School understands that students may bring a personal mobile phone to school or wear a smart watch, particularly if they are travelling independently to and from school.

At Clunes Primary School:

- Students who choose to bring mobile phones to school must have them switched off and securely stored during school hours at the Office.
- Smart watches worn must have network functionality disabled during school hours
- School Bus travel is considered ‘school hours’ – network functionality turned off.
- Exceptions to this policy may be applied if certain conditions are met (see the full CPS Policy)
- When emergencies occur, parents or guardians should reach their child by calling the school's office.

Links to information for parents on DET website:

- [Mobile Phones in Schools](#)
- [FAQs for Parents - Mobile Phones in Schools](#)



# Clunes Primary School Council News – Term I – 2025

## 2024 School Council – Thank You

To Principal Sonia Jardine; staff representatives Ash Burke, Val McNeight and Jesse Parker (Secretary); parent representatives Deb Bright (Vice President), Andy Campbell (Treasurer), Rob Anderson, Jesse Clowes, Jaqui Featherston and Ellen Moroney; and community representatives Malcolm Hull and Gill Jedwab; I would like to sincerely thank you for your commitment to School Council in 2024.

To our retiring members, Ash and Ellen, I would like to thank you for your support, dedication and the valuable contributions you have made during your term on School Council.

## Fundraising at Clunes Primary School

Fundraising at Clunes Primary School contributes heavily in enabling us to complete projects and purchase resources for the benefit of our students. As Government funding will only stretch so far, a significant amount of School Council funding is required to complete both the major works and running repairs required.

## 2024 Fundraising Review – Highlights

We can proudly share the final profits made from our 2024 fundraising events:

| <b>EVENT</b>       | <b>PROFIT</b> |
|--------------------|---------------|
| Truck Show         | \$ 743.00     |
| Book Town          | \$ 2,346.00   |
| Mother's Day Stall | \$ 488.00     |
| Father's Day Stall | \$ 329.00     |
| Clunes Show        | \$ 3,313.00   |
| Tomato Seed Drive  | \$ 630.00     |

## Working Bee

Working bee's are required each Term to undertake targeted maintenance and general gardening jobs. The date and time will be communicated through the newsletter, as well as a list of tasks to be completed and tools required.

We encourage families to come along to our working bee's – the first for the year to be held this **Sunday 23<sup>rd</sup> February 2025 at 8.30am**. This is a great opportunity to get to know other school families, while maintaining and enhancing our school for our kids.

If you require any further information, feel free to contact the School office, or our Buildings & Grounds Coordinator, **Jesse Clowes**.

## Communication at Clunes PS – Formal and Informal

### - Newsletters

Newsletters are sent home the "old fashioned way" (hardcopy with student) and emailed to families every other Thursday. They will also be uploaded onto the School webpage and will be available on the Sentral app on the day of release. Newsletters include a Term Events calendar on the back, a reminder of notes and handouts sent home on the front, pages highlighting classroom learning as well as celebrating student achievements.

### - Sentral

Sentral is our newly introduced "app" allowing communication between School and Home. Families are able to report student absence on the app, give permission to attend excursions, book Parent/Teacher/Student interviews and will find newsletters uploaded. The app has the capability of Student reporting, as well as so much more. We will be slowly introducing new features of the app, as more training is received and more families get onboard. We have a majority of families download and use the Sentral app, and encourage anyone who hasn't already, to make contact with the School to assist with set-up, so that all families are able to access and benefit from this new technology and means of communication.

### - Assembly & Student Messages

A reminder that School Assemblies are conducted every Monday morning. All parents are invited to come along and share in celebrating student successes and awards, as well as to receive valuable information on what is going on at the school firsthand. Teachers will also be contacting families prior to the Monday morning assembly to advise that their child will be receiving an award, so that families have the opportunity of attending to share in the celebration of their child's success. Each afternoon our Grade 5 & 6 students pass on student reminders and messages over the PA system just prior to the bell at 3pm.

- Messenger Group

Our Parent App (Messenger) is an inclusive and valuable communication tool, where questions can be asked and answered in quick time. All parents are invited and encouraged to join. Please see **Deb Bright** for information and to be “added” to the group.

**Parent Group Meetings**

Meetings for the Parents & Friends Group will be held in the School Staffroom. All parents and caregivers are invited to come along to share ideas and work on upcoming fundraising events. If you would rather just listen to what is going on, enjoy a cuppa and the company of other School parents, you are warmly welcome.

**Agenda for Meeting – FRIDAY 28 FEBRUARY, 2025 – 9am:**

Date: FRIDAY 28 FEBRUARY

Time: 9am

Location: School Library

Attendance: ALL WELCOME

For Discussion:

Fundraising: Overview and discussion of parent involvement in fundraising events for 2025, including **Truck Show, Book Town, Election BBQ, Clunes Show**

Mothers Day Stall: Discussion and planning for 2025 – **change of format (stall, pre-order?)**

**Parent Led Initiatives**

We would like to acknowledge the continued support from our parents and school community members who, without fail, commit their time each and every week, to ensure the ongoing success of:

**Friday Fruit Chop (supported by Wesley College)**

**Breakfast Club (Thursday & Friday – supported by Food Bank)**

If any parent would like to be involved in either of these programs, please contact the School Office, or to add your name to the Friday Fruit Chop Roster, contact **Deb Bright** (Roster available via the **Messenger Group**)

These initiatives are parent driven and facilitated, and without your support, would not be possible. Our students appreciate your effort and thank you.

**For Your Diary**

**\* BOOKTOWN FUNDRAISER \***

**Saturday 22 MARCH & Sunday 23 MARCH, 2025**

Helpers required each day to cook and serve “Egg & Bacon Rolls”.

Rosters and more information will be provided soon.

**\* DISCO EVENING - PARENT SOCIAL MIXER \***

**Thursday 27<sup>th</sup> MARCH, 2025**

Parents are warmly invited to enjoy a tea or coffee in the Staffroom while our kids dance the night away at the Term 3 Disco. BYO nibbles This is a great opportunity to meet new and catch-up with old friends

**THANK YOU – CLUNES IGA!**

We would like to acknowledge and thank **Di & Jess** from **Clunes IGA** for their generous support for our Welcome BBQ.

**THANK YOU – CLUNES NEIGHBOURHOOD HOUSE!**

We would like to thank Clunes Neighborhood House - **Deb Bright & Lana DeKort**, for their assistance in initiating the Hot Lunch Program. This was organized and meals provided by **Julie Leech**, and we are incredibly grateful for the quality food and service she provided to the students each week. This program has now been taken on by **Kristin** and **The Top Shop**, and we wish them well.

Again, our thanks to **Julie, Deb & Lana**, for implementing and providing a service that has been embraced by our school families and our kids look forward to each week.



**“TRUCK SHOW” FUNDRAISER**  
**HELP REQUIRED!**  
**Labour Day Long Weekend**  
**SUNDAY 9 MARCH 2025**

Clunes Primary School uses the catering opportunity of the annual Vintage Machinery Show to raise much needed funds for our School.

There are three ways YOU can help:

- Offering your **TIME** on the Day to help in the canteen (see Roster)
- **BAKING**
  - Scones
  - Slices
  - Cakes

NO NUTS – Please provide list of all INGREDIENTS

(Baking to be left at SCHOOL on FRIDAY or delivered to CANTEEN at the SHOWGROUNDS on SUNDAY before 9.00am)

- **DONATIONS of products to use for baking**

Ingredients for baking:

- Marie biscuits
- Milk Arrowroot biscuits
- Self-Raising Flour
- Coconut
- Bars of Chocolate (Mars/Maltesers/Peppermint Crisps etc.)
- Lemons
- Condensed milk
- Cocoa powder
- Soft Icing Mixture
- Packet cake mix
- Blocks of Milk Chocolate
- ETC....

Please leave items in the basket in the School staffroom prior to **TUESDAY 4 MARCH.**

**Anyone willing to make slices, etc., are welcome to use items from the basket.**

**Please contact the School on 5345 3182 for more details**

**YOUR SUPPORT IS GREATLY APPRECIATED**

# “TRUCK SHOW” FUNDRAISER ROSTER SUNDAY 9 MARCH 2025

## 8am – 10.30am

Preparation and packing of sandwiches, cutting and packing of slices

1. Amanda Dossor
- 2.
- 3.
- 4.
- 5.

## 10.30am – 12.30pm

Serving – sandwiches, scones, slices, tea/coffee, soft drinks; Washing dishes, general kitchen duties

- 1.
- 2.
- 3.
- 4.

## 12.30pm – 2.30pm

Serving – sandwiches, scones, slices, tea/coffee, soft drinks; Washing dishes, general kitchen duties

- 1.
- 2.
- 3.
- 4.

## 2.30pm – 4.30pm

Serving – sandwiches, scones, slices, tea/coffee, soft drinks; Washing dishes, general kitchen duties; Pack and clean up

- 1.
- 2.
- 3.

## Baking required: Slices, Cakes, Biscuits, Scones

- 1.
- 2.
- 3.
- 4.
- 5.
- 6.
- 7.
- 8.
- 9.
- 10.
- 11.
- 12.

(Please provide full ingredient list – NO NUTS)



## SCHOOL LUNCHES

### - TERM 1 -

Orders must be placed online by 9am Tuesday  
prior to the delivery date.

NO late orders will be accepted.

Orders cannot be refunded in the event of  
student absences.



Available every week a range of salad rolls or wraps with your choice of fillings.

Vegetarian and Gluten Free option available every week.

Choice of side dish of Water, Milk, Juice, Jelly, Fruit Cup or Cookie

### \$6 MEAL DEAL

**6TH FEB -**

HAMBURGER W CHOICE OF LETTUCE, CHEESE AND TOMATO

**13TH FEB -**

CHICKEN TENDER WRAPS W CHOICE OF LETTUCE, CHEESE AND  
TOMATO

**20TH FEB -**

PIE, SAUSAGE ROLL OR PASTIE

**27TH FEB -**

LASAGNE WITH SALAD

**6TH MARCH -**

HOT DOGS W OPTIONAL CHEESE

**13TH MARCH -**

FRIED RICE

**20TH MARCH -**

NUGGETS & CHIPS OR SALAD

**27TH MARCH -**

PIZZA CHOICE OF CHEESE & HAM, CHEESE OR PEPPERONI

**3RD APRIL -**

FISH BITES & CHIPS OR SALAD

To Order Scan QR Code or visit

<https://clunes-top-shop.square.site/>

**Online orders  
ONLY**





This year Clunes Primary School have teamed up with Tesselaar to fundraise with a Bulb Drive!

- The School will receive 40% of all bulb fundraising money
- Growing instructions provided with your order
- Orders will be received early May, just in time for Mother's Day!
- Online Ordering is Easy

Order your bulbs using the unique code

<http://www.bulbfundraiser.com.au/CLUNESPS>

Pay safely online

Bulbs are delivered directly to your door

\* Get together with a group of friends or family to place an order to save on postage

**Orders close 11 APRIL 2025**

**Please note products are available to order until 11 April, unless sold out prior. We encourage you to order as early as possible to avoid disappointment.**

**If you require any further information, or need some assistance with online ordering, please contact the School Office on 5345 3182.**



# RAISING KIDS IN A DIGITAL WORLD

## Cyber Safety Seminar for Parents & Carers

Social media  
Online gaming  
Strengthening family communication  
Impacts of screen time  
Cyberbullying  
Managing devices at home  
Child & tween online trends  
Explicit/adult content

**Doug Lindsay Recreation Reserve  
Multipurpose Facility**

Wednesday 23 April | 7.00 - 8.30 pm



Register to attend:

[bit.ly/CreswickCommunity](https://bit.ly/CreswickCommunity)

\*This session is strictly for parents and carers only as the content is not suitable for children.



Presented by  
Martin McGauran,  
primary teacher and  
**digital safety educator**  
and Carley McGauran,  
**psychologist and mum**  
to 3 school-aged kids.



An evening that provided some reality checks! A few new changes in our home this week! - Parent

Marty and Carley were simply sensational. Their presentation was relevant, honest and informative. A MUST for each school, every year. - Principal

Incredible session... Should be essential for all parents!  
- Parent

**Clunes Anglican Church are Inviting everyone for  
their Shrove Tuesday**

**Also Known As Pancake Day**

**March 4th @ 12pm**

**To be held at All Nations Lodge**

**23 Service Street Clunes**

**Fully Air-conditioned**

**Sweet & Savoury pancakes**

Tea Coffee & Water Available

Cost \$15

Lucky door prizes and Lucky chair prizes



Trade Table Available Includes

Jams, relish Biscuits and cakes

**RSVP**

**Pam Habib Mob. 0417160857**

**[pj\\_habib@hotmail.com](mailto:pj_habib@hotmail.com)**

**Anastasia Jones [anabhm1@gmail.com](mailto:anabhm1@gmail.com)**

**0411840210**

# FINANCIAL ASSISTANCE

## INFORMATION FOR PARENTS

Every Victorian child should have access to the world of learning opportunities that exist beyond the classroom. The Camps, Sports and Excursions Fund helps ensure that no student will miss out on the opportunity to join their classmates for important, educational and fun activities. It is part of making Victoria the Education State and the Government's commitment to breaking the link between a student's background and their outcomes.

### CAMPS, SPORTS & EXCURSIONS FUND (CSEF)

School camps provide children with inspiring experiences in the great outdoors. Excursions encourage a deeper understanding of how the world works while sports teach teamwork, discipline and leadership. All are a part of a healthy curriculum.

CSEF is provided by the Victorian Government to assist eligible families to cover the costs of school trips, camps and sporting activities.

If you hold a valid means-tested concession card or are a temporary foster parent, you may be eligible for CSEF. A special consideration category also exists for asylum seeker and refugee families. The allowance is paid to the school to use towards expenses relating to camps, excursions or sporting activities for the benefit of your child.

The annual CSEF amount per student is:

- \$154 for primary school students
- \$256 for secondary school students

### HOW TO APPLY

New applicants should contact the school office to obtain a CSEF application form or download from the website below.

If you applied for CSEF at your child's school last year, you do not need to complete an application form this year unless there has been a change in your family circumstances.

You only need to complete an application form if any of the following changes have occurred:

- **new student enrolments:** your child has started or changed schools this year.
- **changed family circumstances:** such as a change of custody, change of name, concession card number, or new siblings commencing this year.

Check with the school office if you are unsure

### MORE INFORMATION

For more information about CSEF visit:

<https://www.vic.gov.au/camps-sports-and-excursions-fund>





**Term 1 Calendar – Draft #3 Thursday 20<sup>th</sup> February 2025**

|         |        |         |  |
|---------|--------|---------|--|
| WEEK 1  | Mon    | 26- Jan | Australia Day PUBLIC HOLIDAY   |
|         | Tue    | 27-Jan  | Staff Professional Learning Day Statewide Student Free Day Clunes PS   |
|         | Wed    | 28-Jan  | Staff Professional Learning Day Student Free Day Clunes PS Day 2   |
|         | Thurs  | 29- Jan | Students first day of Term 1 2025 short whole school Assembly in the Multi-Purpose Hall<br>Prep/ 1 & new parents to Clunes PS- welcome gathering, information & morning tea in the Staff Room<br>Department of Education (DE) Attendance data collection<br>Mini Newsletter home to families. (Hard copy & electronically) |
|         | Fri    | 30-Jan  |  |
| WEEK 2  | Mon    | 3-Feb   | Assembly- School Captains Welcome- Induction of School Captains & Vice-Captains (badges presented)   |
|         | Tue    | 4-Feb   | Every Tuesday is Walk to school Tuesday. Meet Mr. James & Shell at the Queen’s Park playground at 8.30am   |
|         | Wed    | 5-Feb   | Prep/ Foundation students Rest Day/ Assessment Day   |
|         | Thu    | 6-Feb   | First FULL Newsletter home. (Newsletters home each fortnight, sent via email & placed on the school’s website) Notice of School Council election   |
|         | Fri    | 7-Feb   |  |
| WEEK 3  | Mon    | 10-Feb  | Assembly- Induction of House Captains & House Vice-Captains (badges presented)   |
|         | Tues   | 11-Feb  | Student Support Group meetings begin today   |
|         | Wed    | 12-Feb  | Prep/ Foundation students Rest Day/ Assessment Day<br>School Council Meeting 7pm (School Finance Meeting 6.30pm)   |
|         | Thu    | 13-Feb  | Closing Date for School Council elections  |
|         | Fri    | 14-Feb  | Emergency Management- fire drill   |
| WEEK 4  | Mon    | 17-Feb  | Assembly- Induction of Junior School Council (JSC) representatives (badges presented)<br>2025 Clunes PS Welcome BBQ, Open Classrooms evening & Parent Education evening  |
|         | Tues   | 18-Feb  |  |
|         | Wed    | 19-Feb  | Prep/ Foundation students Rest Day/ Assessment Day<br>Junior School Council Meeting 1.10pm   |
|         | Thu    | 20-Feb  |  |
|         | Fri    | 21-Feb  |  |
|         | SUN    | 23-Feb  | WORKING BEE- 8.30-11am   |
|         | WEEK 5 | Mon     | 24-Feb   |
| Tue     |        | 25-Feb  |  |
| Wed     |        | 26-Feb  | Prep/ Foundation students Rest Day/ Assessment Day   |
| Thurs   |        | 27-Feb  |  |
| Fri     |        | 28-Feb  |  |
| WEEK 6  | Mon    | 3-Mar   |  |
|         | Tue    | 4-Mar   | School Council elections- Declaration of School Council Ballot   |
|         | Wed    | 5-Mar   | Prep/ Foundation students Rest Day/ Assessment Day   |
|         | Thu    | 6-Mar   |  |
|         | Fri    | 7-Mar   |  |
| WEEK 7  | SUN    | 9-Mar   | 13 <sup>th</sup> Vintage Truck Show - 1 <sup>st</sup> Clunes school FUNDRAISER for 2025- many helpers required PLEASE see Sonia  |
|         | Mon    | 10-Mar  | Labour Day – Public Holiday  |
|         | Tues   | 11-Mar  |  |
|         | Wed    | 12-Mar  | NAPLAN TBC final Prep/ Foundation students Rest Day/ Assessment Day School Council Meeting AGM   |
|         | Fri    | 14-Mar  | NAPLAN   |
| WEEK 8  | Mon    | 17-Mar  |  |
|         | Tues   | 18-Mar  |  |
|         | Wed    | 19-Mar  | Junior School Council Meeting 1.10pm   |
|         | Thurs  | 20-Mar  | Koorie students- Cultural Gathering Yrs 1-6  |
|         | Fri    | 21-Mar  | Harmony Day Focus Day-mixed groupings across the school & optional dress up theme day. + Food Bank – Food Fight  |
|         | Sat    | 22-Mar  | BOOK TOWN – 2 <sup>nd</sup> Clunes school FUNDRAISER for 2025- many helpers required PLEASE see Sonia  |
|         | Sun    | 23- Mar | BOOK TOWN – 2 <sup>nd</sup> Clunes school FUNDRAISER for 2025- many helpers required PLEASE see Sonia  |
| WEEK 9  | Mon    | 24-Mar  |  |
|         | Tue    | 25-Mar  |  |
|         | Wed    | 26-Mar  |  |
|         | Thu    | 27-Mar  | Term 1 DISCO – theme decided by our Junior School Council  |
|         | Fri    | 28-Mar  |  |
| WEEK 10 | Mon    | 31-Mar  |  |
|         | Tue    | 1-Apr   |  |
|         | Wed    | 2-Apr   |  |
|         | Thu    | 3-Apr   |  |
|         | Fri    | 4-Apr   | Last day of Term 1 2.30pm finish (casual dress day- no gold coin donation. Each last day of Term is casual dress)  |



**Working Bee**  
**Sunday 23<sup>rd</sup> February 2025**  
**8.30-11am**  
 See lists of tasks to be completed inside



**\*\* To be confirmed: Inter- school Swimming events Other Meetings & events – TERM 2 STARTS TUESDAY 22<sup>nd</sup> APRIL, FRIDAY 25<sup>th</sup> APRIL is ANZAC Day Public Holiday. School Captains commitment + students optional commitment at the Ceremony wearing school uniform.**

## Camps, Sports and Excursions Fund APPLICATION Form


**School Name**
**School REF ID**

### Parent/legal guardian details

Surname \_\_\_\_\_

First name \_\_\_\_\_

Address \_\_\_\_\_

Town/suburb \_\_\_\_\_ State \_\_\_\_\_ Postcode \_\_\_\_\_

Contact number \_\_\_\_\_

Centrelink pensioner concession OR Health care card number (CRN)

   -    -    -  OR

 Foster parent\* OR  Veterans affairs pensioner (Gold [Card](#))\*\*

\*Foster Parents must provide a copy of the temporary care order letter from the Victorian Department of Families, Fairness and Housing (DFFH).

\*\*Applicants must provide a copy of the Veteran Affairs Gold card.

### Student details

| Child's surname | Child's first name | Student ID | Date of birth<br>(dd/mm/yyyy) | Year level |
|-----------------|--------------------|------------|-------------------------------|------------|
|                 |                    |            |                               |            |
|                 |                    |            |                               |            |
|                 |                    |            |                               |            |
|                 |                    |            |                               |            |
|                 |                    |            |                               |            |
|                 |                    |            |                               |            |
|                 |                    |            |                               |            |
|                 |                    |            |                               |            |
|                 |                    |            |                               |            |
|                 |                    |            |                               |            |

I authorise the Victorian Department of Education (DE) to use Centrelink Confirmation eServices to perform an enquiry about my Centrelink customer details and concession card status to enable the business to determine if I qualify for a concession, rebate or service. I also authorise the Victorian Department of Families, Fairness and Housing (DFFH) to provide the results of any enquiry to DE regarding temporary care orders.

I understand that:

- DFFH or Centrelink will use information I have provided to DE to confirm my eligibility for the Camps, Sports and Excursions Fund and will disclose to DE personal information including my name, address, payment and concession card type and status.
- This consent, once signed, remains valid while my child is enrolled at a registered Victorian school unless I withdraw it by contacting the school.
- I can obtain proof of my circumstances/details from DFFH and provide it to my child's school so that my eligibility for the Camps, Sports and Excursions Fund can be determined.
- If I withdraw my consent or do not alternatively provide proof of my circumstances/details, I may not be eligible for the Camps, Sports and Excursions Fund provided by DE.
- Information regarding my eligibility for the Camps, Sports and Excursions Fund may be disclosed to DFFH and/or State Schools Relief for the purpose of evaluating concession card services or confirming eligibility for assistance.

You can request access to the personal information that we hold about you, and to request that any errors be corrected, by contacting your child's school.

Signature of applicant \_\_\_\_\_ Date \_\_\_\_ / \_\_\_\_ / \_\_\_\_

## Camps, Sports and Excursions fund eligibility

Below are the criteria used to determine a student's eligibility for the Camps, Sports and Excursions Fund (CSEF).

### Criteria 1 – Eligibility

To be eligible\* for the fund, a mature minor of sixteen years of age or over, a parent or legal guardian of a student attending a registered Government or non-government Victorian primary or secondary school must:

- on the first day of Term one; or
  - on the first day of Term two.
- a) Be an eligible beneficiary within the meaning of the State Concessions Act 2004, that is, be a holder of Veterans Affairs Gold Card or be an eligible Centrelink Health Care Card (HCC) or Pensioner Concession Card (PCC) holder; or
  - b) Be a temporary foster parent; and
  - c) Submit an application to the school by the due date.

\* A special consideration eligibility category also exists. For more information, see: [Camps, Sports and Excursions Fund \(CSEF\): Eligibility | education.vic.gov.au](https://www.education.vic.gov.au/csef/eligibility)

Mature minors or parents who receive a Carer Allowance on behalf of a child, or any other benefit or allowance not income tested by Centrelink, are not eligible for the CSEF unless they also comply with one of (a) or (b) above.

### Criteria 2 - Be of school age and attend school in Victoria

School is compulsory for all Victorian children aged between six and seventeen years of age inclusive.

For the purposes of CSEF, students may be eligible for assistance if they attend a Victorian registered primary or secondary school. Typically, these students are aged between five and eighteen years inclusive.

CSEF is not payable to students' attending pre-school, kindergarten, home schooling, or TAFE.

#### Eligibility Date

For concession card holders, CSEF eligibility will be subject to the parent/legal guardian's concession card being successfully validated with Centrelink (see [Camps, Sports and Excursions Fund \(CSEF\): Policy | education.vic.gov.au](https://www.education.vic.gov.au/csef/policy)).

## Payment amounts

### CSEF payment amount

The CSEF is an annual payment to the school to be used towards camps, sports and/or excursion expenses for the benefit of the eligible student.

The CSEF is paid directly the school and will be allocated by the school towards camps, sports and/or excursion costs for your child. Please refer to the policy for the current rates.

**For ungraded students**, the rate payable is determined by the student's date of birth. For more information, see: [Camps, Sports and Excursions Fund \(CSEF\): Payment amounts | education.vic.gov.au](https://www.education.vic.gov.au/csef/payment-amounts)

**Foundation and Year 7 government school students** who are CSEF recipients are also eligible for a uniform voucher. Schools are required to make applications on behalf of parents, so please register your interest at the school.

## How to complete the application form

**NOTE: ALL SECTIONS MUST BE COMPLETED BY PARENT/LEGAL GUARDIAN**

1. Complete the PARENT/LEGAL GUARDIAN DETAILS section.  
 Make sure that the Surname, First Name, and Customer Reference Number (CRN) details match those on your concession card. You will also need to provide your concession card to the school.  
 If you are claiming as a Foster Parent or a Veteran Affairs Pensioner, you will need to provide a copy of documentation confirming your status as a temporary Foster Parent or provide your Veterans Affairs Pensioner Gold card to the school.
2. Complete the STUDENT/S DETAILS section for students at this school.
3. Sign and date the form and return it to the school office as soon as possible.

CSEF payments cannot be claimed retrospectively for prior years.

**Queries relating to CSEF eligibility and payments should be directed to the school.**